



Create Your  
**Perfect  
Home**

with windows, doors  
and conservatories



Give yourself  
the home  
**you really  
deserve**



# Create Your **Perfect Home**



Stylish, energy saving and completely maintenance free. For high quality PVCu window, door and conservatory products, you won't find better choice or value.

Tired of maintaining ageing, weatherworn timber? PVCu is the perfect answer. Versatile and elegant, our comprehensive window, door and conservatory range is designed to suit any style of architecture. What's more, we can tailor-make designs to reflect your personal taste and needs.

#### **Lasting quality**

We're passionate about quality, so only the best materials and components are selected to create our products. For example, the PVCu profile supplied by Duraflex meets the highest quality standards. Our products are manufactured using material produced under the latest British standards. PVCu has now achieved a Green Guide A rating, reinforcing the material's place in sustainable construction.

#### **Personal service**

Our commitment to quality extends from manufacture to customer service and support. Expect a courteous, personal and professional service, with expert advice to choose the best products for your needs.

#### **Superior performance**

Relax in a home that's warmer and quieter. Our well insulated frames, quality double glazing, weather tight seals and multi chambered profiles ensure that heat loss is kept to a minimum. Where noise is an issue, the thermal insulation properties of PVCu and our unique Q-Lon gasket will help to minimise any disturbance from the world outside.

Save Money  
Cut Wasted Home  
Energy By Up To  
**20%**



# A better choice for you and your home

Modern double glazing doesn't just look good. It can save you money too. From styling to performance to saving energy, our advanced glazing technologies are engineered to give you a comfortable, secure, quiet, energy efficient home.

#### Reduce wasted energy and cut bills

Choosing energy efficient windows, doors and conservatories to replace single glazed or older double glazed units saves energy from day one. In fact, replacing the windows alone could reduce your heating costs by up to 20% - perhaps worth up to £321 a year\*.

#### Choose better looking frames

Clear, uncluttered sightlines ensure windows look well proportioned, elegant and attractive. Features like our low sightline Q-Lon weatherseal ensure performance and style with savings.

#### Reduce condensation and noise

Lowering heat loss at glass edges can cut window, external door and conservatory condensation by up to 80%. Glass units and our high performance Q-Lon gasket helps reduce noise pollution over a wider temperature range, too.

#### Using less energy means less CO<sub>2</sub>

Science suggests man-made emissions play a major role in global warming and, in turn, influence climate change. Home energy use alone accounts for 27% of UK carbon dioxide (CO<sub>2</sub>) emissions which contribute to climate change.

The Glass and Glazing Federation calculates that if all UK replacement windows installed were B and C rated instead of the minimum building regulation specification, each household could save the energy equivalent to making 34,000 cups of tea!

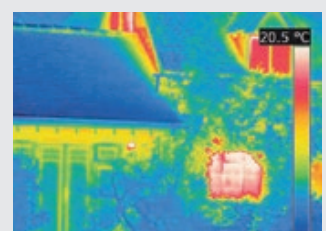
\* Replacing single glazed aluminium windows with energy efficient 'C' rated double glazing in an average gas heated bungalow/semi. GGF carbon calculator @ 2% inflation.



## Our Windows Make More of Ambient Heat

**In winter, the energy efficient coated glass used in our windows retains warmth within the home. It's also designed to exploit radiant heat energy from the sun. These properties result in significant fuel savings compared to a single glazed dwelling.**

**Right:** The images show just how effective fitting energy efficient windows to your property can be. The right hand side of the property still has the original windows - the reds and pinks show heat escaping. However, the new extension on the left is fitted with energy efficient windows, the lack of reds and pinks proving they help dramatically reduce heat loss.





Tilt and Turn



# Open your mind to **21st century style**

The PVCu window has come a long way over the past two decades. Gone are the days of bulky and obtrusive frames. Today, PVCu windows are not only designed to look good, but also to meet the highest standards of quality and performance.

No matter what style of property, we can offer you a design of window to complement the architecture. From the simplest casement window to the grandest Victorian bay, we can create both traditional and individual looks for your home.

Strong, secure PVCu construction means they'll never rot, warp or require repainting; just an occasional wipe clean keeps them looking like new.

#### **Combine the traditional and the modern with vertical slider windows**

Suitable for both replacing existing timber sliders in period buildings and adding character to any development, vertical sliders retain all the traditional features of their familiar counterpart but with the enhanced benefits that modern PVCu systems provide.



Casement

Create Your  
**Perfect Home**

Reduce Condensation  
In Your Home  
**BY UP TO 80%\***

\* Our windows are typically 3-4°C warmer than those with metal spacer bars, reducing condensation by up to 80%.



Vertical Slider



Bow Window



Bay Window





# An entrance to **welcome you home**

The entrance to your home is a focal point, both inside and out. Our high quality doors – in 2, 3 or 4 pane styles and various finishes – guarantee you and your visitors a stylish welcome.

Our PVCu residential doors not only look good; they're tough, too. Whatever style you choose, it'll easily withstand the knocks of family life year after year.

Doors also need to be secure – keeping your family and possessions safe. All our doors are fitted with the best security features including multi-point locking mechanisms.

Choosing the door to suit your lifestyle and the character of your home isn't a problem. If you want privacy from the

outside world, choose from our range of solid options, or if you want light to flood in and brighten a hallway, we can offer you a range of glazed options to suit your every need.

#### **Composite Doors**

Composite doors are an alternative to PVCu doors, offering all the benefits of low maintenance and security but with the traditional look of a timber door.





Create Your  
**Perfect Home**

Whichever style of door you choose, we can offer a wide range of glazed and solid options.







**French Door**



**Patio Door**



Create Your  
**Perfect  
Home**



# Step outside for a breath **of fresh air**

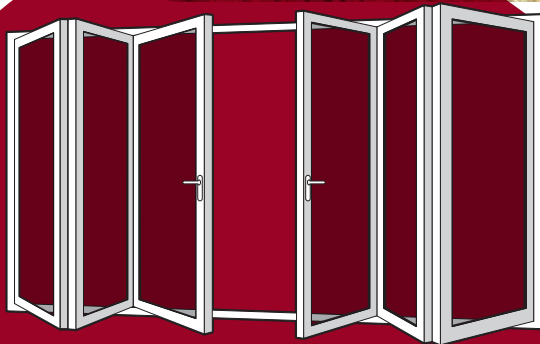


Whatever style of door you want, and whatever size, we can create exactly what you need.

Maybe a large, generous patio door is right for you? Or are you looking for the elegance of our French style doors?

Classic and stylish, French doors provide a wonderful way to open up a room into the space outside. Through the addition of glazed and solid panels, you can create a design that's perfectly suited to the style of your home.

As always, safety and security are our top priority. All our products are available with high security locks and toughened or laminated glass is fitted as standard.



**“Bi-fold doors are the perfect way to bring sunlight and warmth into your home.”**



# PVCu & Aluminium bi-fold doors **Sleek style, solid design**

Bi-folding doors glide open to seamlessly join inside and outside space.



Flood any room with natural light and, in just a couple of seconds, open up for extra space and the feel of a cool summer breeze.

The addition of a bi-fold door can completely transform a living space - their flexible nature mean they can be fully opened, partially opened, or totally closed depending on the space available and, naturally, on what the weather's like. Versatile and aesthetically pleasing, our bi-fold doors are the perfect replacement for existing patio or French doors to flood any room with natural light.

All of our bi-fold doors are designed with slim contemporary lines and hidden gearing. Sophisticated hardware has never looked so sleek and stylish.

## The Benefits of Bi-Fold Doors

It's not just about beauty. The PVCu & Aluminium bi-fold doors utilise industry leading technology that gives you - and your home - the absolute cutting edge in looks, weathering, and security. Our bi-fold doors are the full package - excellence both inside and out.

- **Shootbolt locking for all doors and 3 hook locking to master door**
- **A Rated energy efficient performance - PVCu**
- **Double and triple glazed options**
- **Choose from 2 to 6 door panels**
- **All manufactured hardware achieves Secure By Design**



# A seamless addition to **transform your home**

Extend your home with one of our PVCu conservatories and get new outlook on life. A conservatory is more than just another room: it's a room with a view.

Our choice of traditional and contemporary designs, PVCu colours, finishes and window and door styles is simply second to none. If you need advice, just ask. Our consultants will be delighted to create a design sympathetic to your property, your living requirements and, of course, budget.



**“Well insulated, stylish conservatories offer comfortable and practical environments families can use all year round.”**









## Whatever **the weather**

**Our heat reflective glass will ensure you enjoy your conservatory all year round.**

The unique coating reflects about 69% of total solar energy.  
Almost twice as much as standard glass.

Reduce potentially expensive heating bills.  
Our product out-performs standard glass by more than 50%.

Warm edge spacer technology increases the edge temperature by up to 65%.

This product is a world first, offering true self-cleaning glass  
that never stops working.

Glare is reduced by 44% all year round compared to standard units.



# Choosing your conservatory

There's more to choosing a conservatory than settling on a style. Use our tips to help get everything just right...



## **1. Use**

What do you hope to get out of your new room? Will it be a study perhaps? Or a play-room? An office? Or maybe just an extra space to relax in. Whatever you choose, its use will determine how large you need your new space to be, and which layout will best accommodate your needs.

## **2. Materials**

Your new space should fit seamlessly with your lifestyle. Materials such as PVCu are incredibly hardwearing and low maintenance. No need for step ladders and re-painting, oil on the hinges and a wipe down every now and again will keep your conservatory looking like new.

## **3. Positioning**

Think about the position of your conservatory. Those that face the South will receive the most sun during the day. If this is the case, you may need to consider extra ventilation and possibly blinds in order to block out some of the harsher rays.

## **4. Size**

Once you've made a decision on your design, it might be best to check the dimensions of both your house and your garden. A conservatory should be an extension of your current living space, and shouldn't take up valuable garden space.

## **5. Glazing**

New advancements have been made to ensure the glass used in conservatories works its hardest for the homeowner. Keeping you cooler in summer and warmer in winter means a conservatory isn't just a seasonal room.

## **6. Planning Permission**

If you're building a conservatory in England or Wales, you will not usually need planning permission. However, it is always better to be safe than sorry. If you are in any doubt always check as early as you can with your local council.





# Extensive designs to complement **every home**

The doors and windows you choose have a major influence on the look and character of your home. Choose a finish that makes your home feel like it's yours.

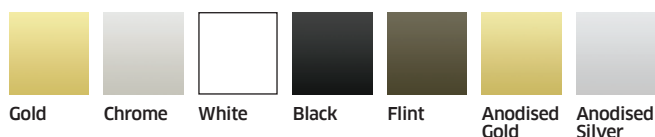
#### Woodgrain

Our comprehensive range of products are available in a range of finishes - brilliant white, mahogany, rosewood and golden oak. Woodgrain on white achieves the look of traditional hardwood frames on the outside and brilliant white frames on the inside.

#### Door and window furniture

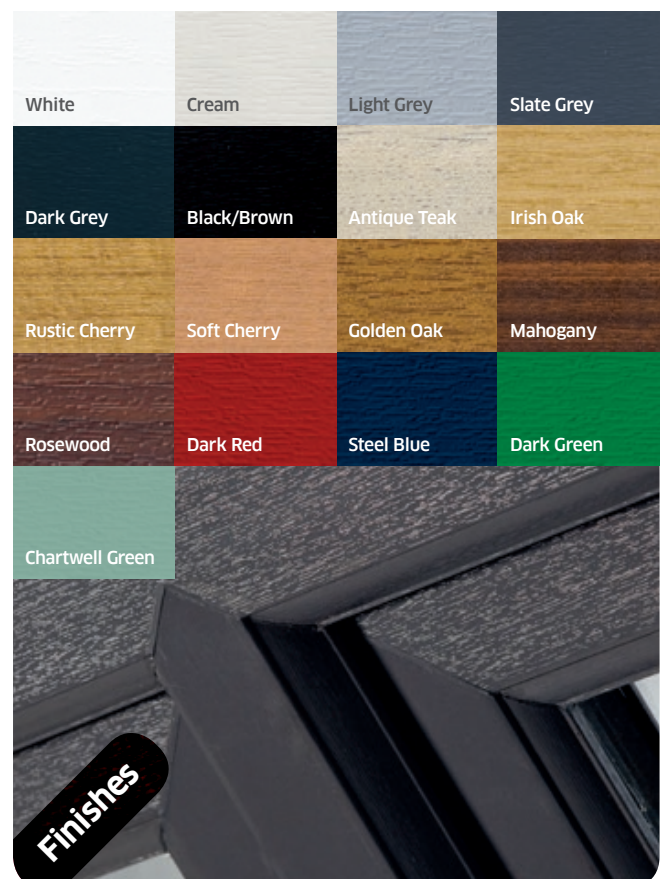
Create a great first impression with our stylish selection of door accessories. From pad handles to scroll handles in a choice of colours including chrome, gold and black. These can be combined with matching letter plates, numbers and knockers. Our door furniture is available in gold, white, black and chrome; enabling you to select what best suits your home and personal taste.

Our sales advisors will be delighted to show you samples.



#### Finishes

A variety of finishes are available to complement your home including white, woodgrain and a range of solid colours.



Colours are representative and may vary. Please see material swatch for actual colour.

Create Your  
**Perfect  
Home**

